

Charles BILASH

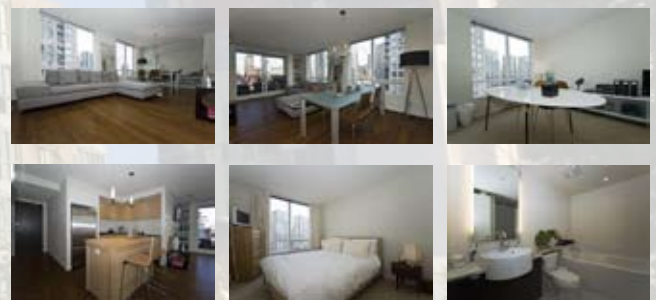


604.685.5951 | charlesbilash@century21intown.ca

603 - 1188 Quebec Street | Mount Pleasant



Completely re-designed and re-configured gorgeous contemporary space that feels like a chic Penthouse featuring unobstructed west facing False Creek water views, city and mountain views combined with one of the most unique oversized layouts - including high vaulted ceilings, custom details throughout and plenty of signature walls for your stunning art collection and more. There was absolutely no expense spared on this professionally designed and renovated one of a kind space. Walk into this very clean and modern home to be greeted by the solid oversized porcelain tile floors which meet with the wenge wide plank hardwood floors. There is all new custom lighting throughout, new doors and hardware, fresh new wall colours, new kitchen, new bathrooms and more. Some of the upgrades include the Fisher Paykel appliances, wine fridge, Kohler and Paini fixtures, Carrera marble gas fireplace and custom puller blinds. The kitchen also features solid slab white quartz granite counters, plenty of clean contemporary high gloss acrylic blizzard white cabinetry (all have slow pulls/closes), huge oversize eating bar area, stainless steel appliance package, and a bright window to help inspire you to create kitchen masterpieces while entertaining your friends and family. The grand master bedroom has space for huge king size furnishings and much more, custom made closets with organizers and built-ins; which lead to the sumptuous Spa inspired ensuite - with his and hers porcelain basins, separate soaking oversized tub and a glass enclosed shower. Don't miss this great opportunity of owning a reputable Bosa built home within a short stroll to the new Olympic Village, Seawall, Downtown, Sky train and much more. Comes with 2 side by side parking stalls, 1 secure separate storage locker and great balcony. Must see to truly appreciate.



Bedrooms: 2 | Bathrooms: 2
Price: \$XXX,XXX

Gorgeous Contemporary SPACE