



# Prudential

## Sterling Realty

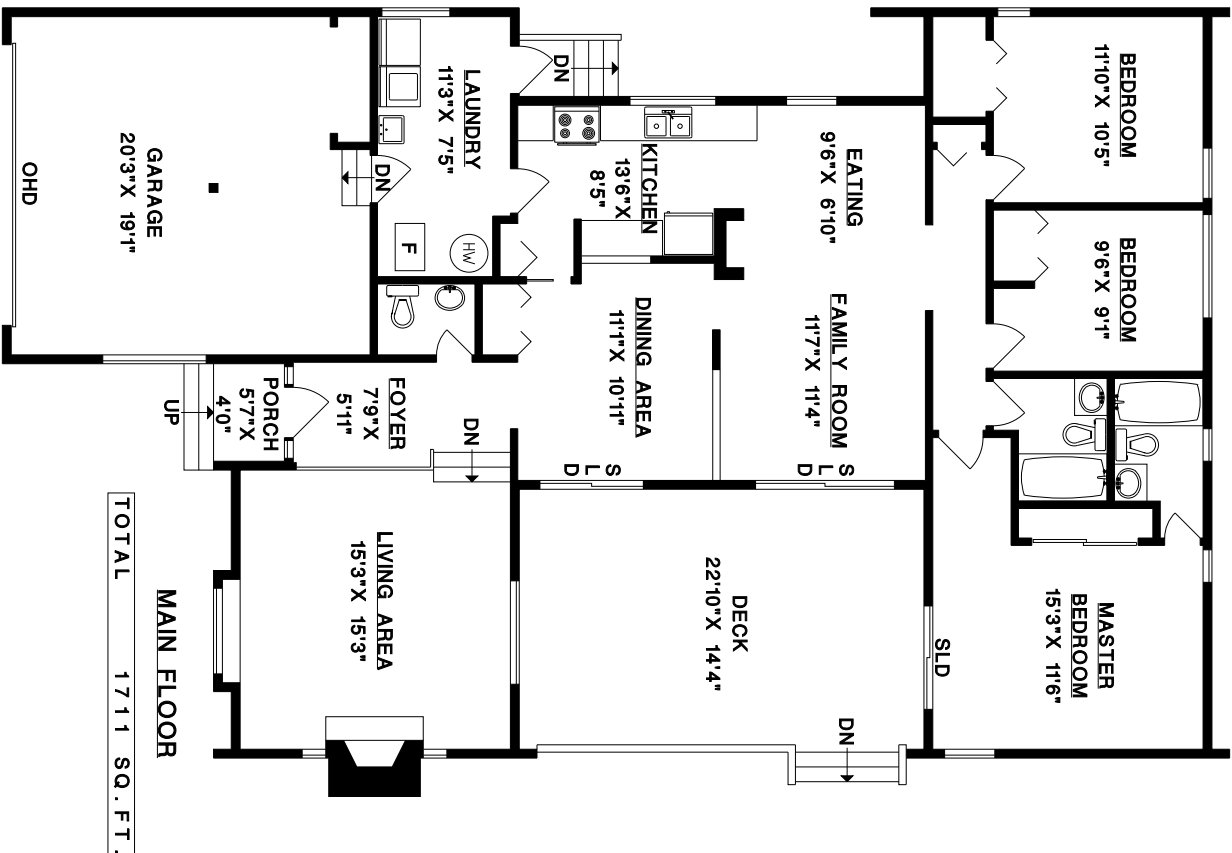
JOHN GRASTY - 778-878-0778

[www.RealestateEvolved.com](http://www.RealestateEvolved.com)

**1636 142ND STREET,  
SURREY, B.C.**

MAIN FLOOR	1711 SQ. FT.
TOTAL	1711 SQ. FT.

GARAGE	414 SQ. FT.
DECK	332 SQ. FT.
PORCH	22 SQ. FT.



TOTAL	1711 SQ. FT.
-------	--------------

**MAIN FLOOR**



1" = 6'  
SCALE