

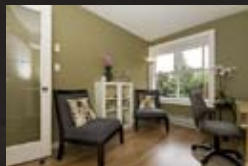


Location
Location
Bright Open
Corner Unit

308 - 2485 Atkins Avenue | Port Coquitlam



Location, Location! This bright open corner unit 2 Bed/2 Bath has great layout with large living/dining room combo. Recent reno's consist of new appliances, carpet and window treatments. Beautiful laminated floors, tiled entry, cozy gas fireplace, imported marble tile in kitchen and baths. Spacious master, with huge closet. Large ensuite laundry with extra storage and separate locker too! Across from Gates Park with its many play fields, tennis courts, and miles of trails along Coquitlam River. A short walk to the convenience of dt PC, Coquitlam Centre, West Coast Express, Rec Centre, and shopping. This well maintained building is yearly maintenance checked with a proactive council. Concrete between floors for sound proofing. Sought after building, so act fast.



Bedrooms: 2 | Bathrooms: 2

Price: \$275,500.00

Quality Service is my Trademark



Ryan Diehl

Royal LePage Coronation West

2185 Austsin Avenue Coquitlam V3K 2R9 P: (604) 939-6666 F: (604) 939-3808

(778) 878-3325 | rdiehl@shaw.ca | www.ryandiehl.ca