

4586 SADDLEHORN CRESCENT, LANGLEY, BC



SABRINA FREEMAN, Ph.D.



Remax Treland Realty

604-961-8634

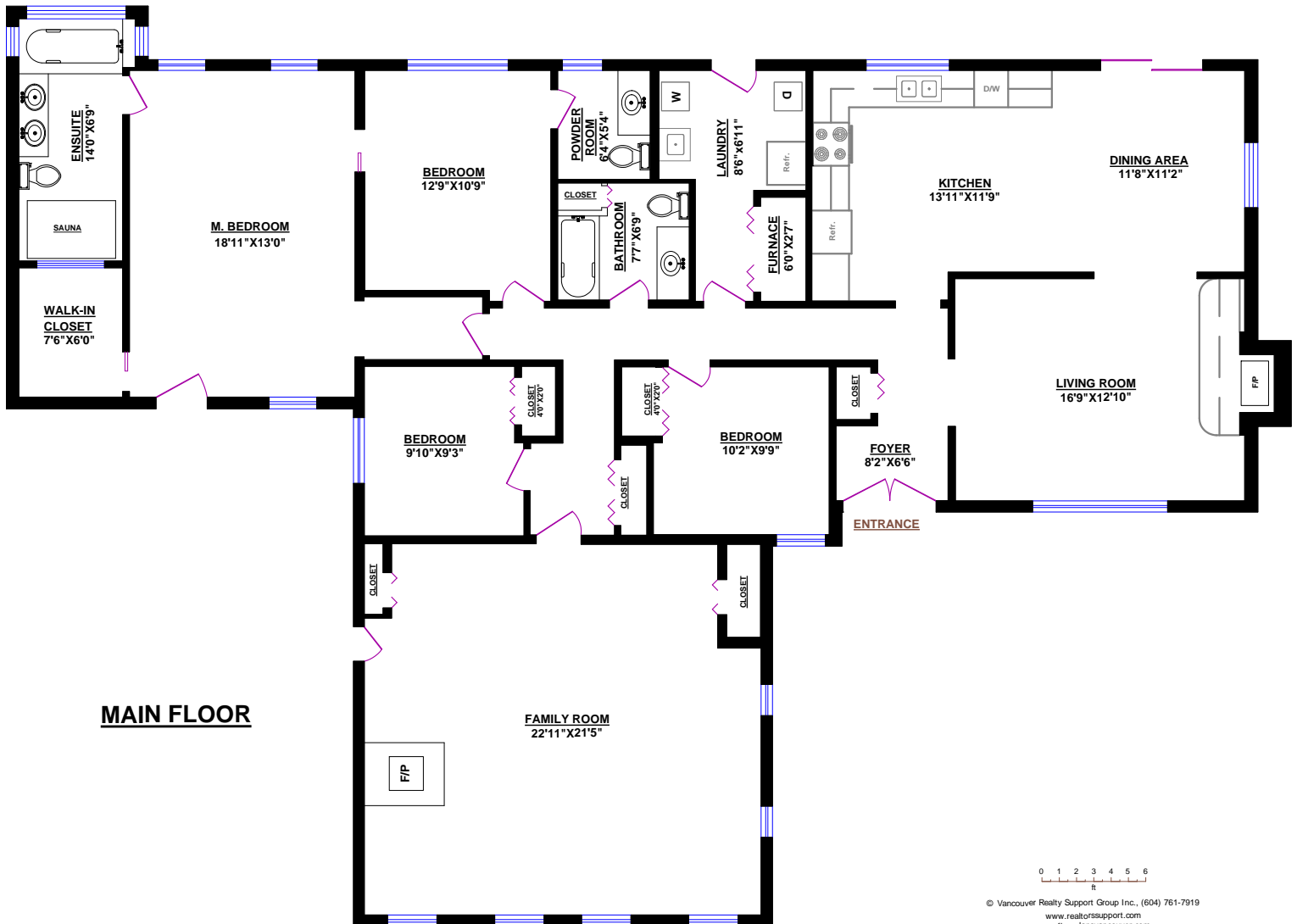
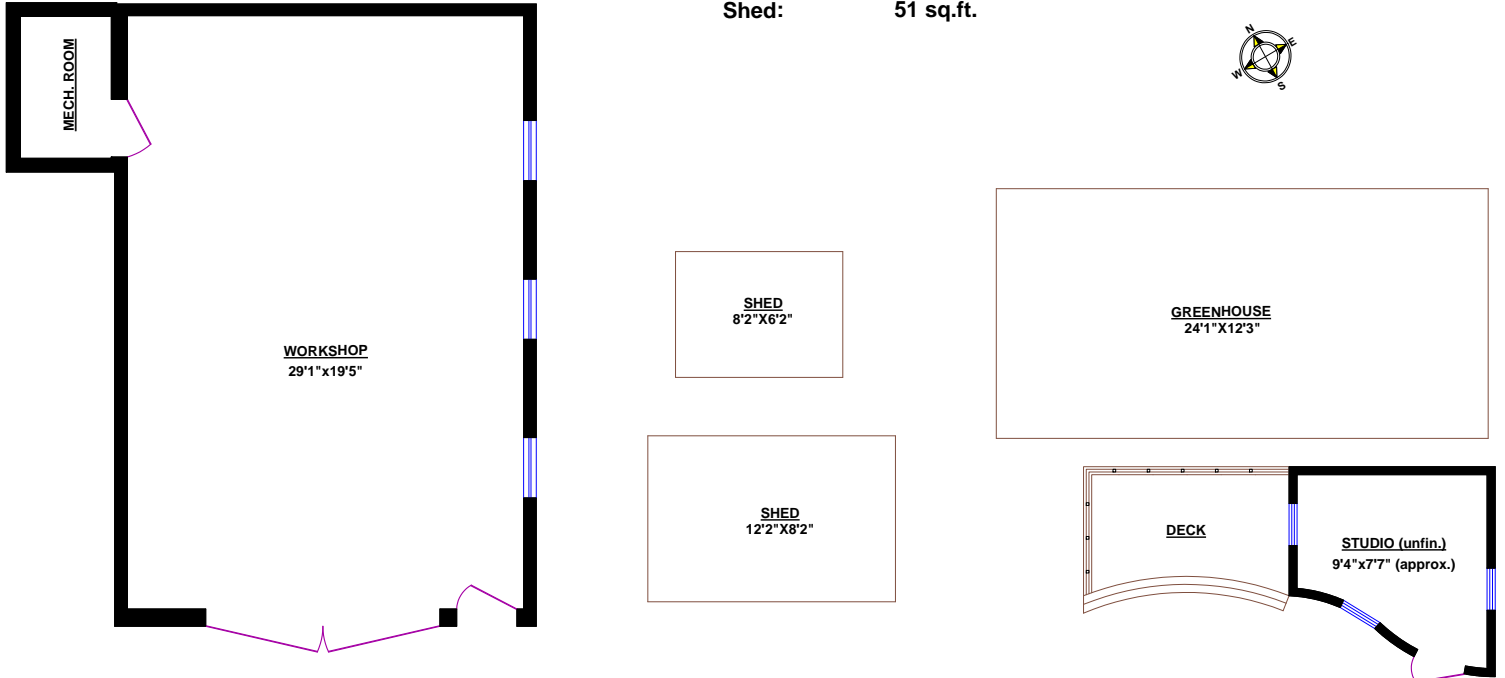
www.yourhomebc.com

TOTALS

Main Floor (finished): 2,392 sq.ft.
 Main Floor (unfinished): 0 sq.ft.
GRAND TOTAL: 2,392 sq.ft.

OTHER AREAS:

Workshop: 675 sq.ft.
 Greenhouse: 295 sq.ft.
 Studio (unfin.): 85 sq.ft.
 Shed: 99 sq.ft.
 Shed: 51 sq.ft.

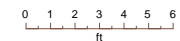




4586 SADDLEHORN CRESCENT, LANGLEY, BC

TOTALS
Main Floor (finished): 2,392 sq.ft.
Main Floor (unfinished): 0 sq.ft.
GRAND TOTAL: 2,392 sq.ft.

OTHER AREAS:
Workshop: 675 sq.ft.
Greenhouse: 295 sq.ft.
Studio (unfin.): 85 sq.ft.
Shed: 99 sq.ft.
Shed: 51 sq.ft.



4586 SADDLEHORN CRESCENT, LANGLEY, BC

TOTALS

Main Floor (finished): 2,392 sq.ft.
Main Floor (unfinished): 0 sq.ft.
GRAND TOTAL: 2,392 sq.ft.

OTHER AREAS:

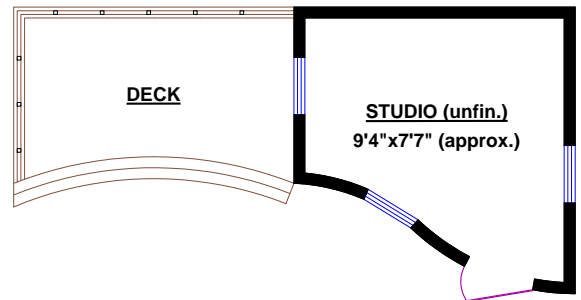
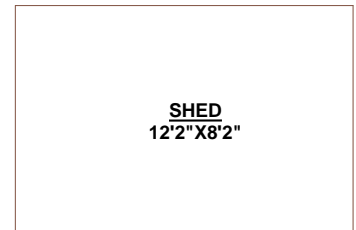
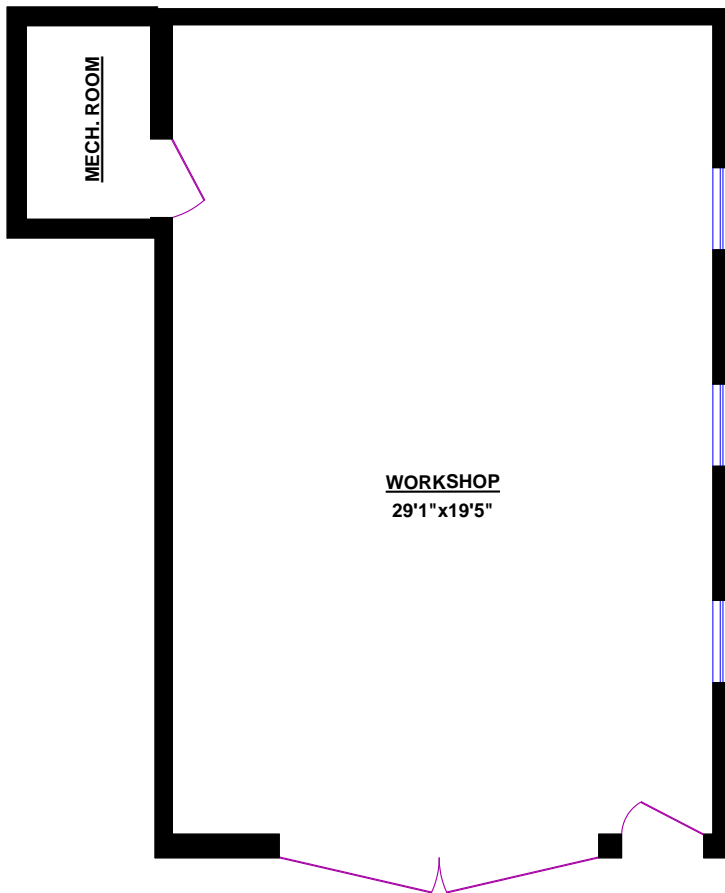
Workshop: 675 sq.ft.
Greenhouse: 295 sq.ft.
Studio (unfin.): 85 sq.ft.
Shed: 99 sq.ft.
Shed: 51 sq.ft.



SABRINA FREEMAN, Ph.D.
Remax Treeland Realty



604-961-8634
www.yourhomebc.com



WORKSHOP / STUDIO / GREENHOUSE / SHEDS

